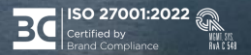


Secure Container Release

The electronic Delivery Order solution



Yasmine Raes
Head of product strategy
yasmine.raes@t-mining.be



Team

- > 20 FTE's
- > In-house expertise in Maritime & Technology
- > All key positions staffed internally
- > HQ in Antwerp

T-Mining

- > Founded in 2016
- > Used by 3 of the Top 5 Container Carriers
- > Operating in Belgium, the Netherlands, Poland and the United Kingdom & users in +25 countries

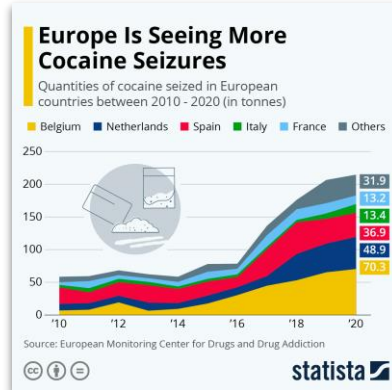


Problem

PIN-codes, used to organise the container release process, have proven to be highly insecure

PIN-code fraud has become a main problem in many European ports

Security & Safety has become a global priority for the industry.



PIN-code fraud

- Staff exposed to organised crime
- Compromised data & containers
- Damaged company reputation

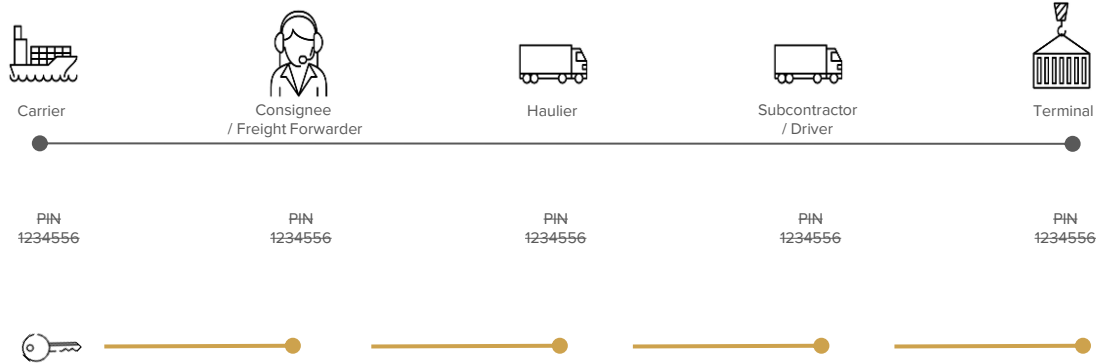
Pain of the Pain

- Complex ICT & cyber security issue
- Large & International scale
- Commercial sensitive information

Solution

Secure Container Release (SCR) tokenizes the right to pick up a container.

Using blockchain, this right can now be transferred between all parties involved without PIN-codes.



Problem

- manual interventions
- fragmented process
- unsecured data exchange

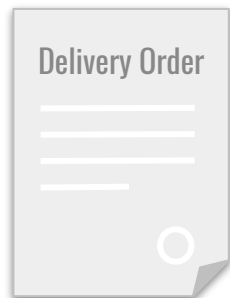
Solution

- blockchain-secured token
- digital flow between all parties via web-app or API
- multi-port, multi-carrier & multi-modal

Technology

Secure Container Release (SCR) tokenizes the right to pick up a container, ie. an electronic Delivery Order.

Leveraging blockchain, this right can now be transferred between all parties involved without any pincodes.



Before
Delivery Order
paper-based



123456

2010
PIN-code
email-based



2020
Secure Container Release
blockchain-based

Phased rollout

A phased approach ensures a smooth adoption, allowing a gradual transition towards the new way of working and reduces friction.

Today, Phase III is in production at MPET in Antwerp



Phase I	Secure Release	PIN-code old way of working	
Phase II	Secure Release	Secure Transfer	PIN-code old way of working
Phase III	Secure Release	Secure Transfer	Secure Pick-up

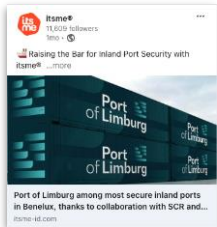
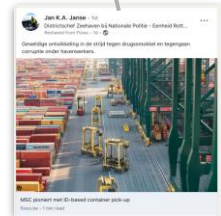
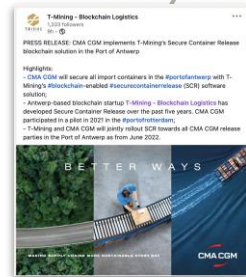
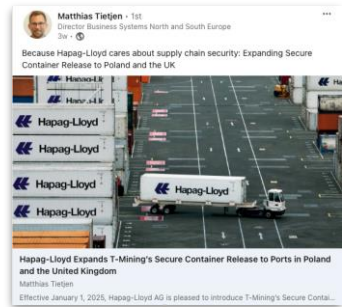
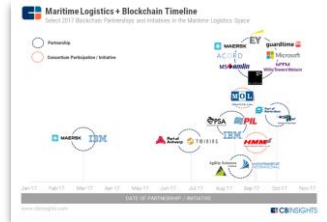
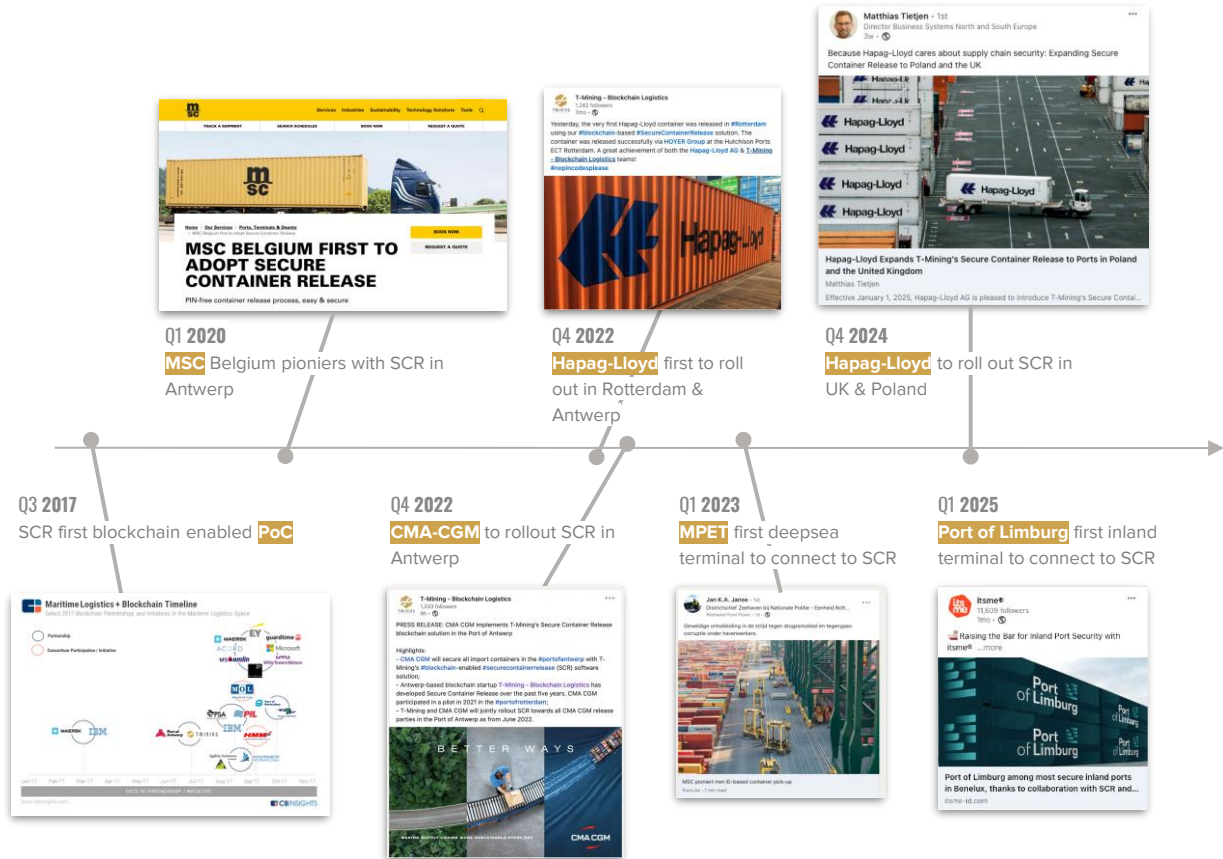
<----- Phase III in production at MPET since January 2023, allowing a 100% PIN-code free release process ----->

Track record

SCR used in production since March 2020 by MSC Belgium. Both Hapag Lloyd and CMA CGM has joined SCR.

Today, SCR is used in Belgium, the Netherlands, UK and Poland.

SCR is compliant with local port regulations and offers local port connectivity services.



SCR network

SCR is used by 3 of the 5 biggest Carriers and over 6.000 Freight Forwarders and Transport companies in more than 25 countries.



In production in ports in
Belgium
Netherlands
Poland
UK

>6.000
 companies connected active in

>25
 countries

MPET &
Port of Limburg
 in Phase III

>25
 in Phase II

pre-integrated with



Let's talk

Thank you for your attention

Yasmine Raes
Head of product strategy
yasmine.raes@t-mining.be

www.t-mining.be