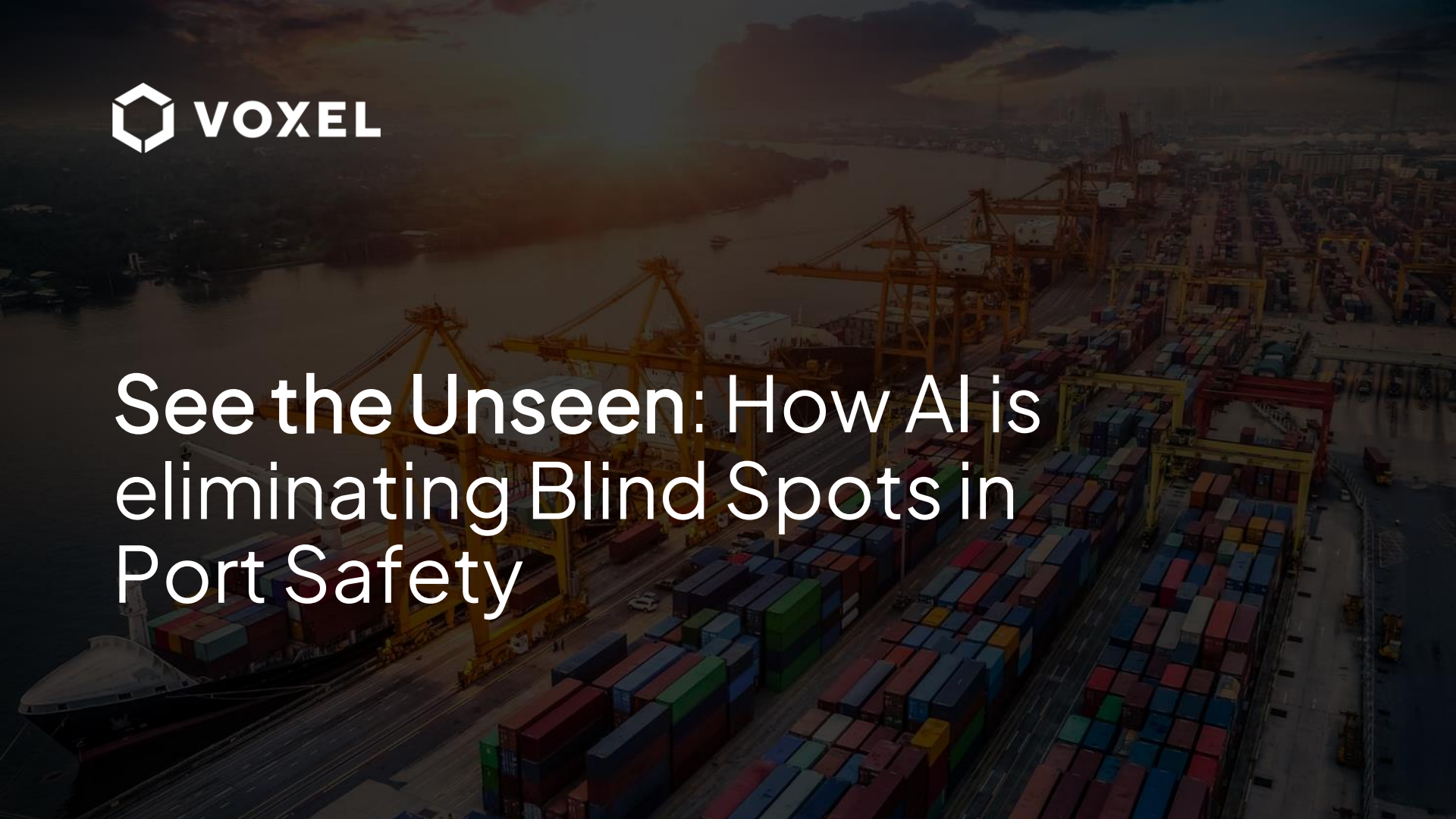




See the Unseen: How AI is eliminating Blind Spots in Port Safety



Welcome to Today's Session



Chris Skipper, CSP,
CFPS

Head of Customer Solutions



POLL

Has your org or team
used AI to advance your
safety strategy?

Safety Challenges of Today



High Traffic
Environments



Aging
Workforce



Fatigue &
Human Error



Reactive
Safety Culture

The Problem?

Ports are complex, high-risk environments where people, equipment, and vehicles interact at scale — often across vast, dynamic spaces. Yet many safety programs still rely on lagging indicators like injury reports and manual audits to identify risks.

This creates a critical blind spot.

Port leaders lack visibility into the leading indicators that drive serious incidents. Without this visibility, safety efforts remain reactive, and preventable injuries and costly disruptions persist.

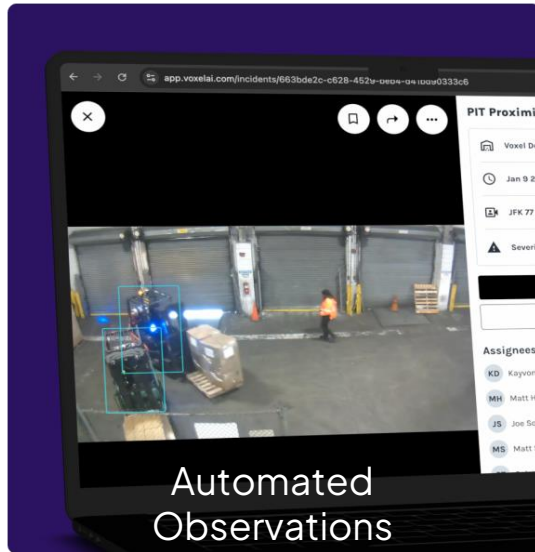
The majority of workplace injuries are preventable

The problem is limited visibility into leading indicators forcing a reactive approach

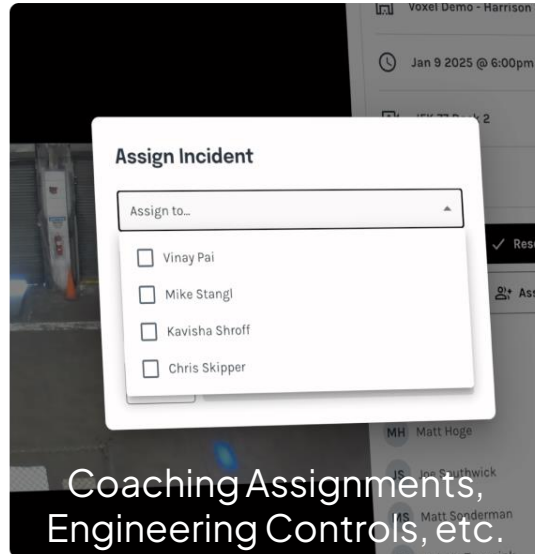


Proactive safety management

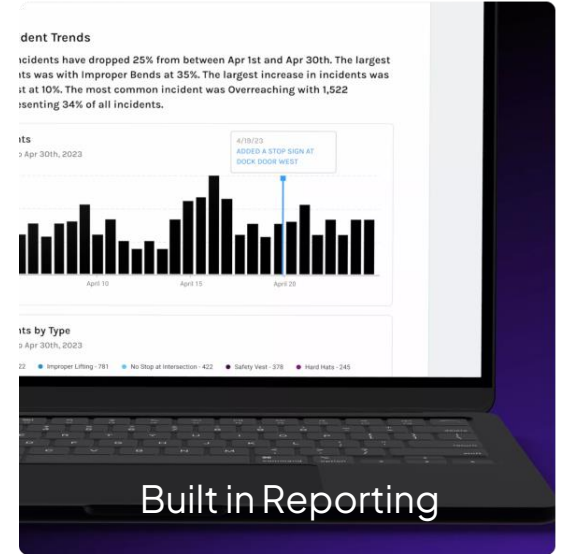
 IDENTIFY



 ACT



 MEASURE



Uncover leading indicators of risk with computer vision



Ergonomics

[Improper Bending](#)
[Overreaching](#)



Vehicle Safety

[Speeding Violations](#)
[Stop at Intersection](#)
[PIT & PED Proximity](#)



Operations

[Open Door Duration](#)
[Parking Durations](#)

Information Classification: General



PPE

[Hard Hats](#)
[Safety Vest](#)
[Bump Caps](#)
Hairnets



Area Controls

[Liquid Spills](#)
[No PED Zones](#)
[Obstructions](#)
Working at Heights
Under Suspended Load
Machine Hazard Alerts



PLATFORM OVERVIEW

A single integrated platform for proactive safety management



Seamless Integration with Existing Camera Systems



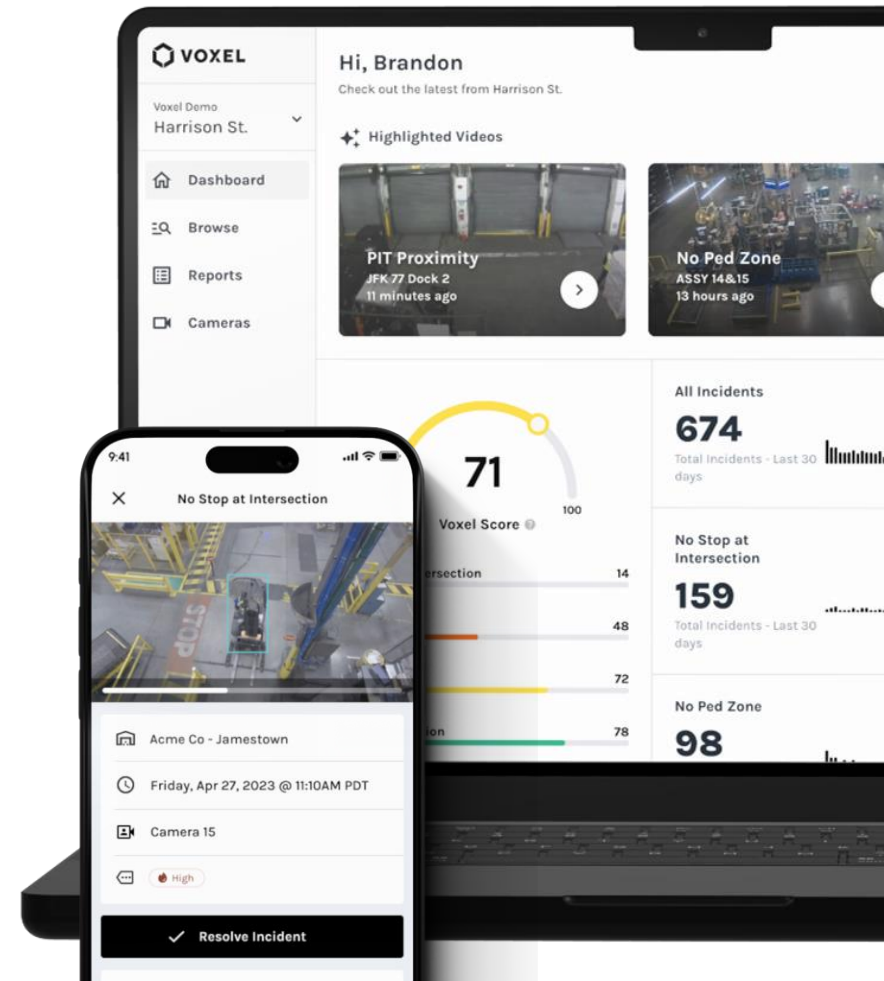
Actionable, Expert-Driven Insights



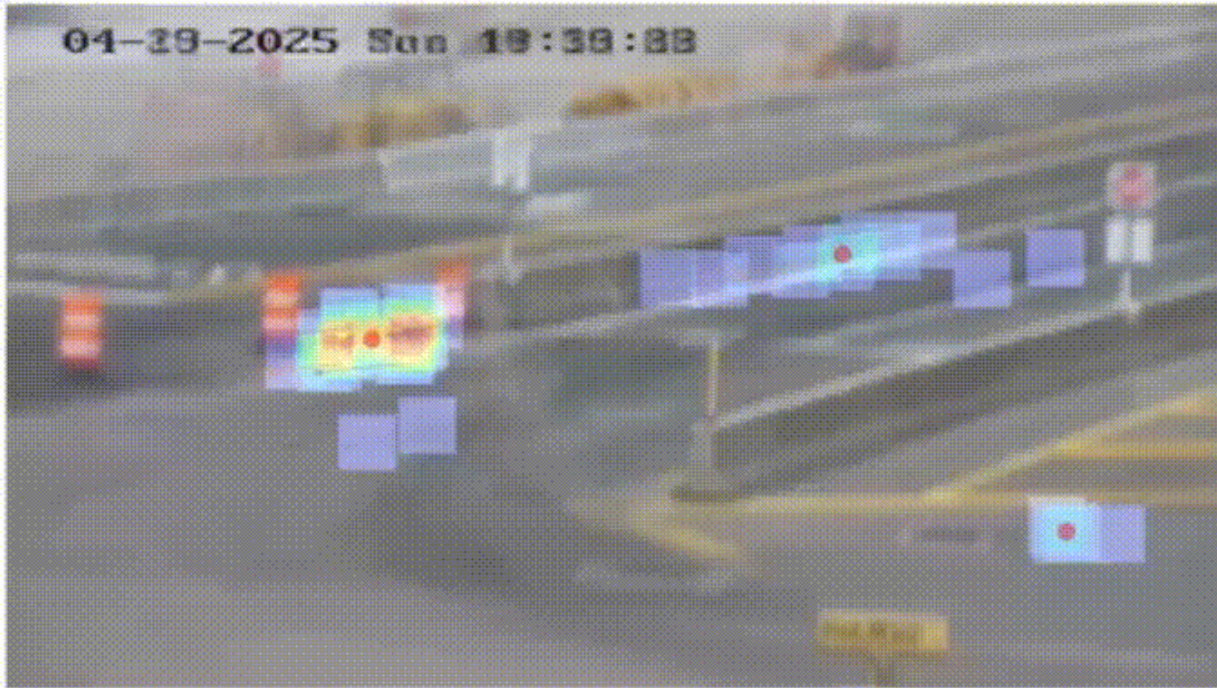
Streamlined Compliance Automation



Continuous AI Learning for Adaptability



04-19-2025 Sun 18:39:33



All Filters

Sort By Time ↓

(Incidents: 0)

Select a hotspot to view incidents.

Incident Scale (Turbo)



Voxel Demo
Harrison St. >

Home

Boards >

Dock Door Area - Shift 2

Ergonomist Board

Manage Boards >

Browse

Reports

Cameras

ORGANIZATION

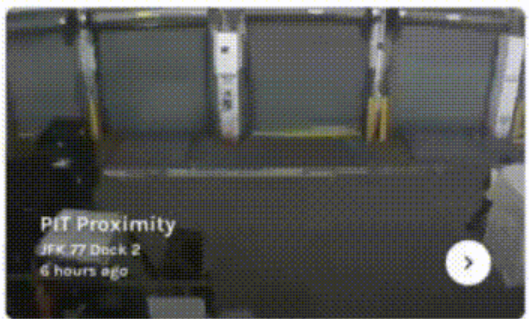
Teammates

Brandon

Support

Highlighted Videos

View All



Incidents by Camera

Last 30 days

Camera	Total
Dock Door 12	87
Pack station 37-40	48
Dock 4	34
Loading Bay C	32
Perishable Dock 28 - North	32
Value Add	32
Receiving Breakdown	31
Dock Facing shipping	29
Shipping Command Center	29
G&A Machine 13	27

All Incidents

674

Total Incidents - Last 30 days

15% ↓



Assigned To Me

1

Resolved

9

Open

No Stop at Intersection

161

Total Incidents - Last 30 days

113% ↑



Assigned By Me

1

Resolved

4

Open

Safety Vest

114

Total Incidents - Last 30 days

89% ↓



Bookmarked

3

Recent Activity

Kayvon Deldar assigned inc

Plug & play integration



Connects to Existing Cameras

Compatible with most CCTV cameras via RTSP. Live within 48 hours.



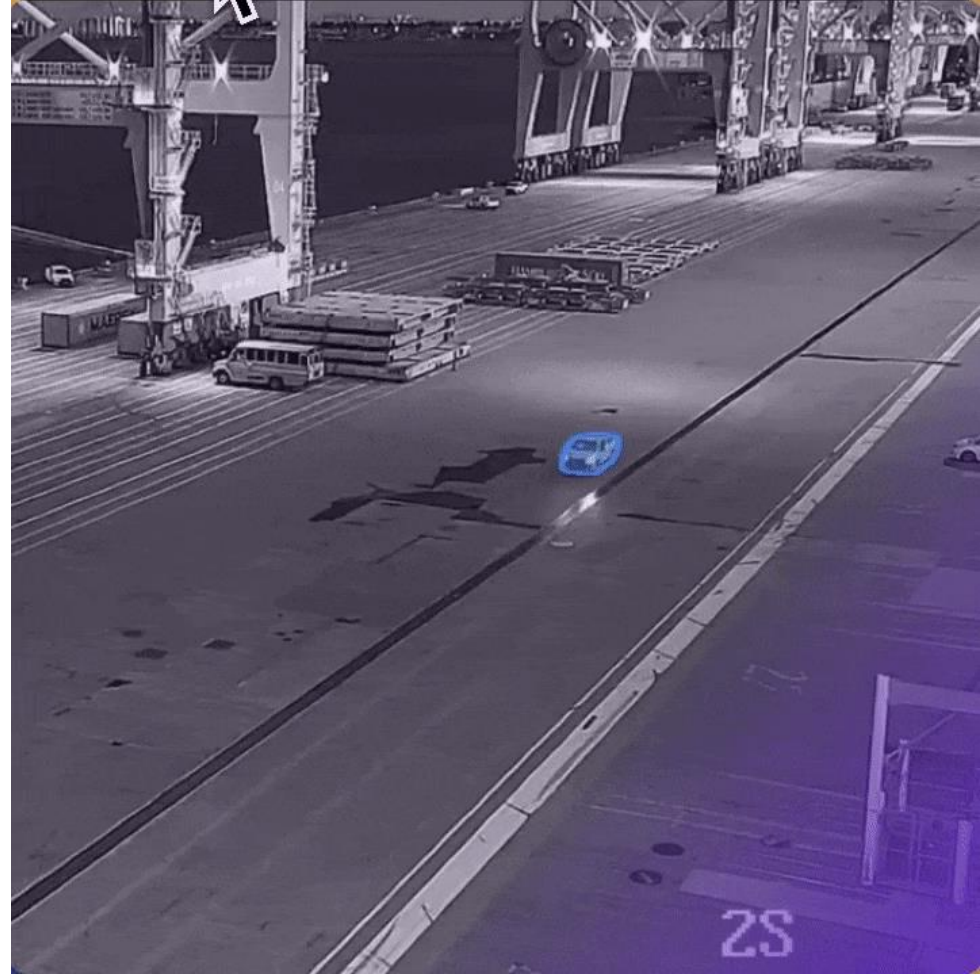
Privacy First

No facial recognition & body blurring available. SOC-2 certified.



Scalable

Cameras using 500 kbps per camera. Integrations available for larger camera networks.



CASE STUDY



The Port of Virginia, America's most modern gateway, elevates their safety standards by using Voxel to swiftly identify and mitigate risks like high-speed collisions and PPE non-compliance.

Within 6 months, they:

- Reduced 'no-stop' incidents among truck drivers at high-risk intersections.
- Increased employee and visitor safety in high traffic areas with ped zones and vests.
- Saved 125 minutes/day looking for non-conformance for virtual TSEP program.

BEHAVIOR

REDUCTION

Truck Speeding 30+ MPH	50% ▼
No Stop at Intersection	15% ▼
Safety Vest When Entering	15% ▼

“ What I’m happy about most is the time I save with Voxel. I used to spend 2–3 hours per day reviewing recorded footage. Now, I spend 20–30 minutes looking at data, and I can spend the rest of that time managing additional tasks, working on projects, interacting with employees and continuing to provide a safe workplace culture.”

Andy Copley
Assistant Manager - Health & Safety

CASE STUDY



Alliance Ground International (AGI) is a leading cargo, ground, and mail handling provider across 62 airports, employing over 12,000 people and processing 1.8 billion kilos of cargo annually. AGI operates round the clock, in high-risk, high tempo environments, particularly at major hubs like JFK, LAX, ATL, ORD, and SFO.

Using Voxel, AGI has:

- Reduced proximity incidents of PIT-to-person and PIT-to-PIT interactions.
- Identified ergonomic risks by tracking improper bends and overreaching behaviors

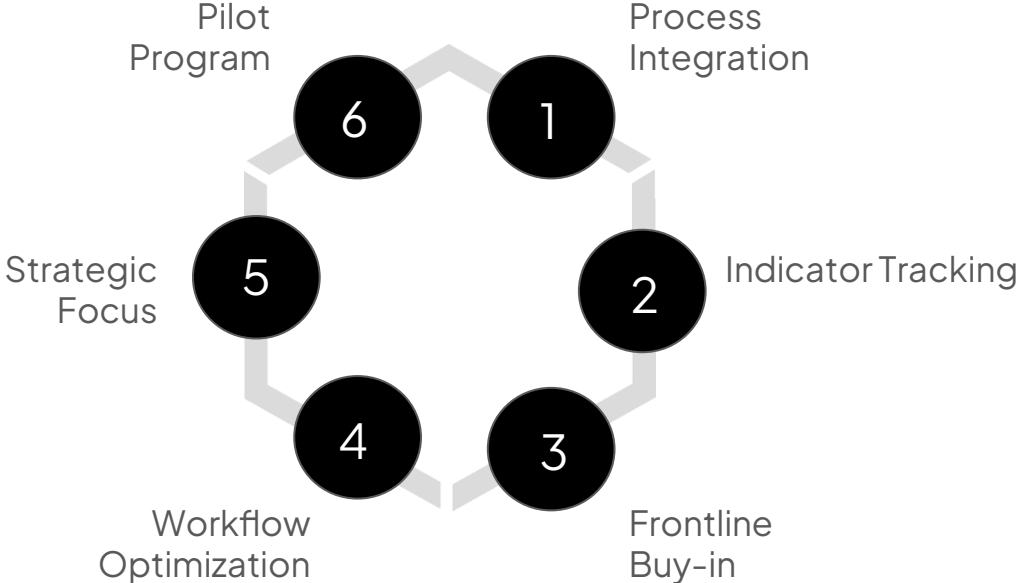
RISK	REDUCTION
Recordable Injuries	91% ▼
PIT struck by injuries	83% ▼
Hazards, Near misses, and Operational risks	37% ▼
WC claim costs	85% ▼



Trusted By Large Enterprises (& Unions)



Best Practices



Thank you.

Industry Recognition & Awards



Overall SupplyTech
Innovation of the Year
June 2025



TT Club Innovation in
Safety Award
February 2025



AI Startup Pitch
Competition
October 2024

01-04-2024 14:56:13



LP17-C

02-19-2024 Mon 11:13:41



01-09-2024 Tue 12:15:07



25-A

01-02-2024 17:03:45

