

Seafarers'  
Trust

An introduction to

# OSH Ports

**Katie Higginbottom**

**Head of the ITF Seafarers' Trust**

**TOC Safety Village**

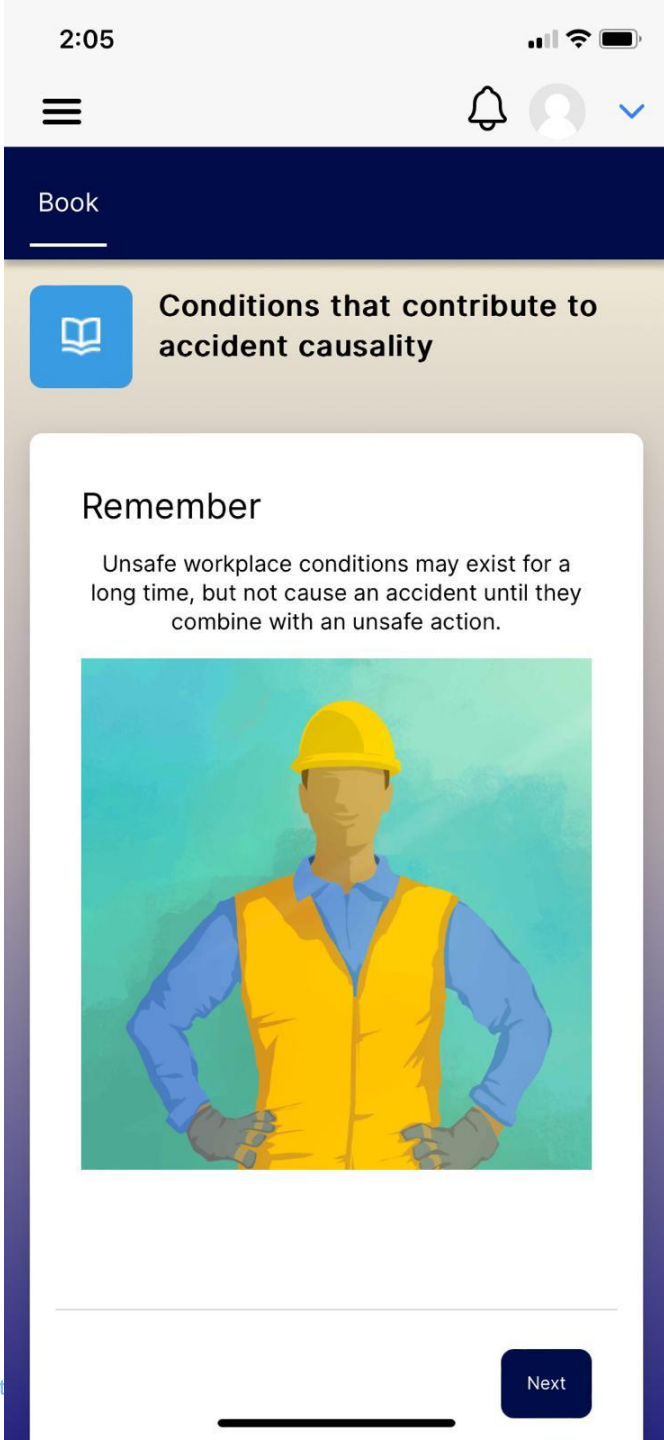
**19 June 2025**

**12.00-12.30**

# What is OSH Ports?

- Award winning App-based training on occupational safety and health for portworkers
- Developed by industry experts with input from unions
- Supported by the ILO-ITC
- Learning and Engaging prize at the TT Club Innovation in Safety Awards 2025
- Five module course with final assessment (est. 8 hours)





# OSH Ports content

1. Introduction to OSH Ports
  2. How and why things go wrong
  3. Hazard identification and Risk Assessment
  4. How to control risk
  5. Information and Communication
- Final Assessment

## Module 1: Introduction to OSH Ports

Introduces participants to the OSH Ports course and the importance of worker participation in better occupational safety and health.

### Key learning outcomes

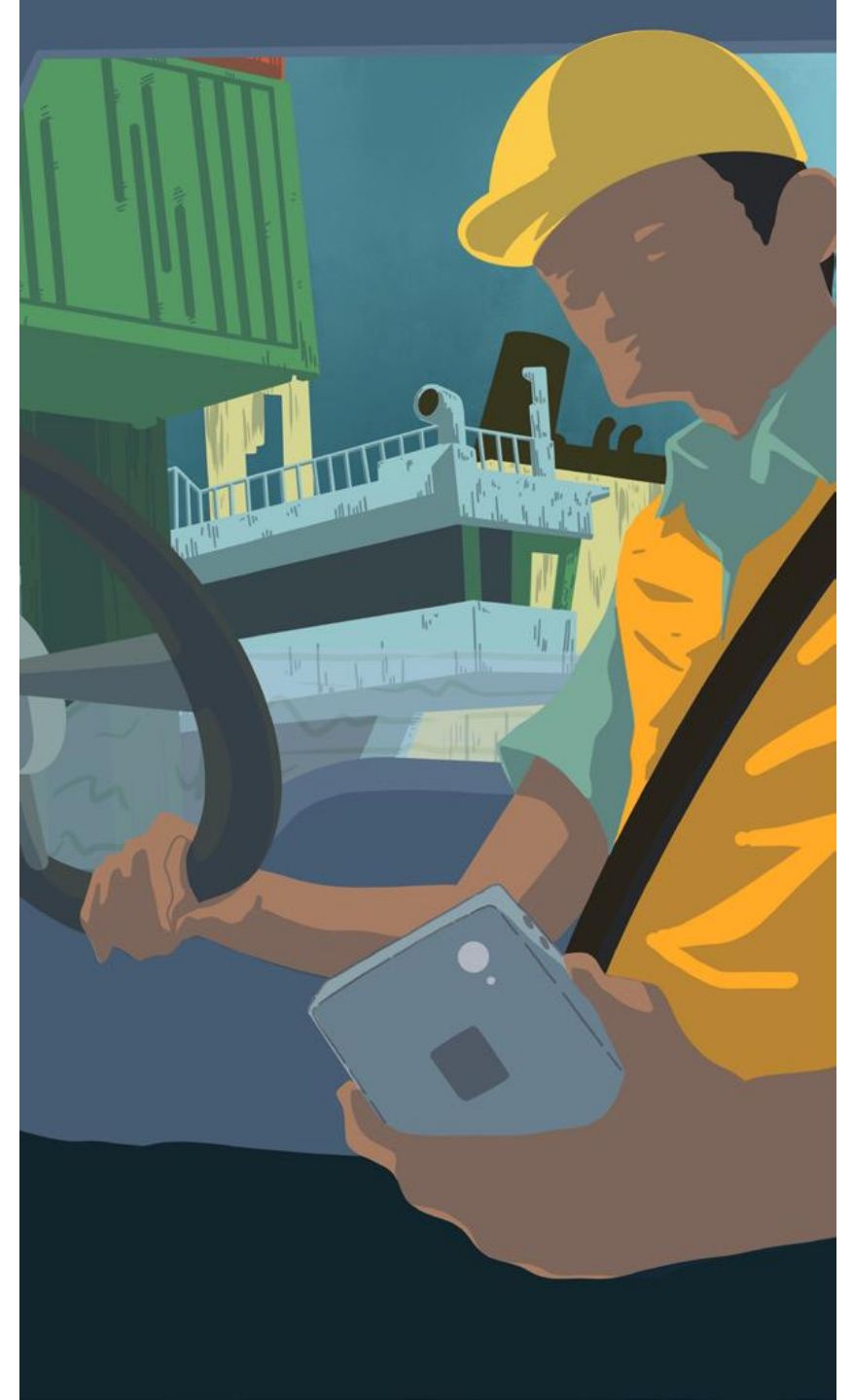
- Purpose and structure of the course
- Where to find OSH international regulations
- How to consider OSH in your own workplace

## Module 2: How and why things go wrong

Provides participants with the skills to understand how and why workplace safety can go wrong.

### Key learning outcomes

- How things go wrong
- Why things go wrong



### **Module 3: Hazard identification and risk assessment**

Provides participants with skills to conduct hazard identification and risk assessment at their port.

#### **Key learning outcomes**

- Understand the basics of risk management
- Understand the differences between hazard and risk
- Identify hazards encountered in port workplaces
- Assess and prioritise risks

### **Module 4: How to control risks**

Provides participants with skills and knowledge to develop effective control measures for identified risks in the workplace.

#### **Key learning outcomes**

1. Define risk control
2. Understand the hierarchy of risk controls
3. Identify examples of control measures



## Module 5: Information and communication

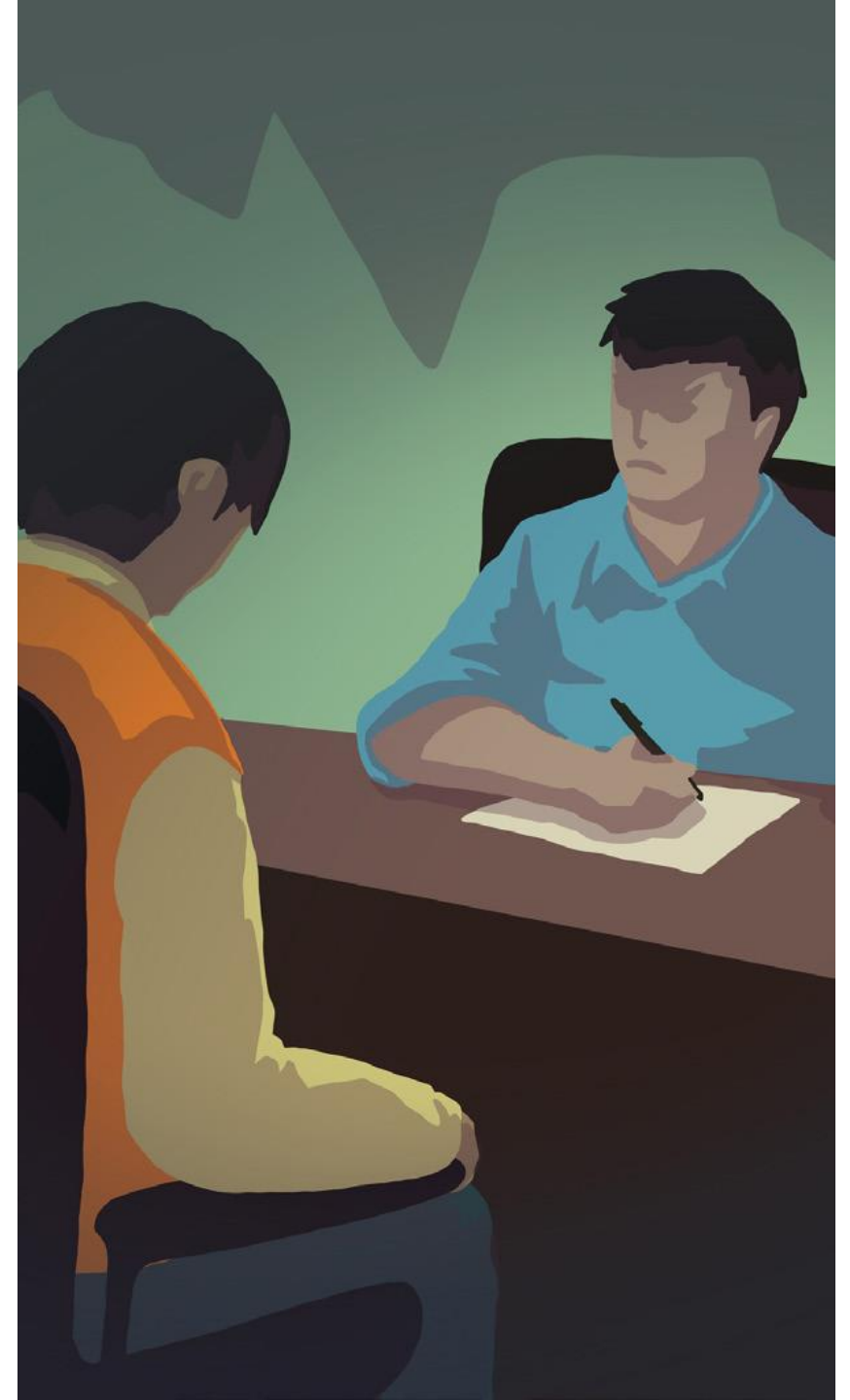
Enables participants to contribute to investigations by knowing what questions to ask, what information to provide and how to present it.

### Key learning outcomes

1. Compile information for an incident report
2. Develop or contribute to an incident report
3. Communicate and present the report

### Assessment and certification

- Module assessment – 6 questions must be correctly answered to complete the module. The final assessment consists of 12 questions from a randomized pool.
- Final assessment, 12 questions, pass mark of 10 to receive a personal certificate by automated email.





Study the image, then choose whether this shows an unsafe action, or an unsafe condition.



Unsafe condition

Unsafe action

## Question 2

Not yet answered  
Marked out of 2.00

Flag question

Study the image, then choose whether this shows an unsafe action, or an unsafe condition.

# Key features

## Activities

- to stimulate reflection or discussion
- reinforce key learning points
- engage users

## Graphics

- designed for the target audience

## Videos

- to introduce each module

## Trainers' manual and promotional materials

- to support roll-out

# Why OSH Ports?

- Workers have a right to a safe and healthy workplace
- Too many accidents, near misses and fatalities occur in ports
- A union initiative to improve health & safety awareness
- Employers should be responsible for a safe workplace
- Workers should play a central role in ensuring their own safety



**Download the app**



Google Play and the Google Play logo are trademarks of Google LLC.  
Apple logo® and App Store® are trademarks of Apple Inc.

**Occupational Safety and Health  
in Ports**



# Why are we here?

- Opportunities for collaboration
- Licensing OSH Ports
- Potential for different languages
- Bespoke content
- Open to discussion...



Download the app



Google Play and the Google Play logo are trademarks of Google LLC.

Apple logo® and App Store® are trademarks of Apple Inc.

Occupational Safety and Health  
in Ports



Supported by





# Thank you

For more information:

[www.oshports.org](http://www.oshports.org)

[www.seafarerstrust.org](http://www.seafarerstrust.org)

[katie@seafarerstrust.org](mailto:katie@seafarerstrust.org)

Download the app



Google Play and the Google Play logo are trademarks of Google LLC.

Apple logo® and App Store® are trademarks of Apple Inc.

Occupational Safety and Health  
in Ports



Supported by

