



TOC
EUROPE

KEYNOTE SPEAKER

ERHAN ILOĐLU

DEPUTY CEO & CMO
YILPORT HOLDING

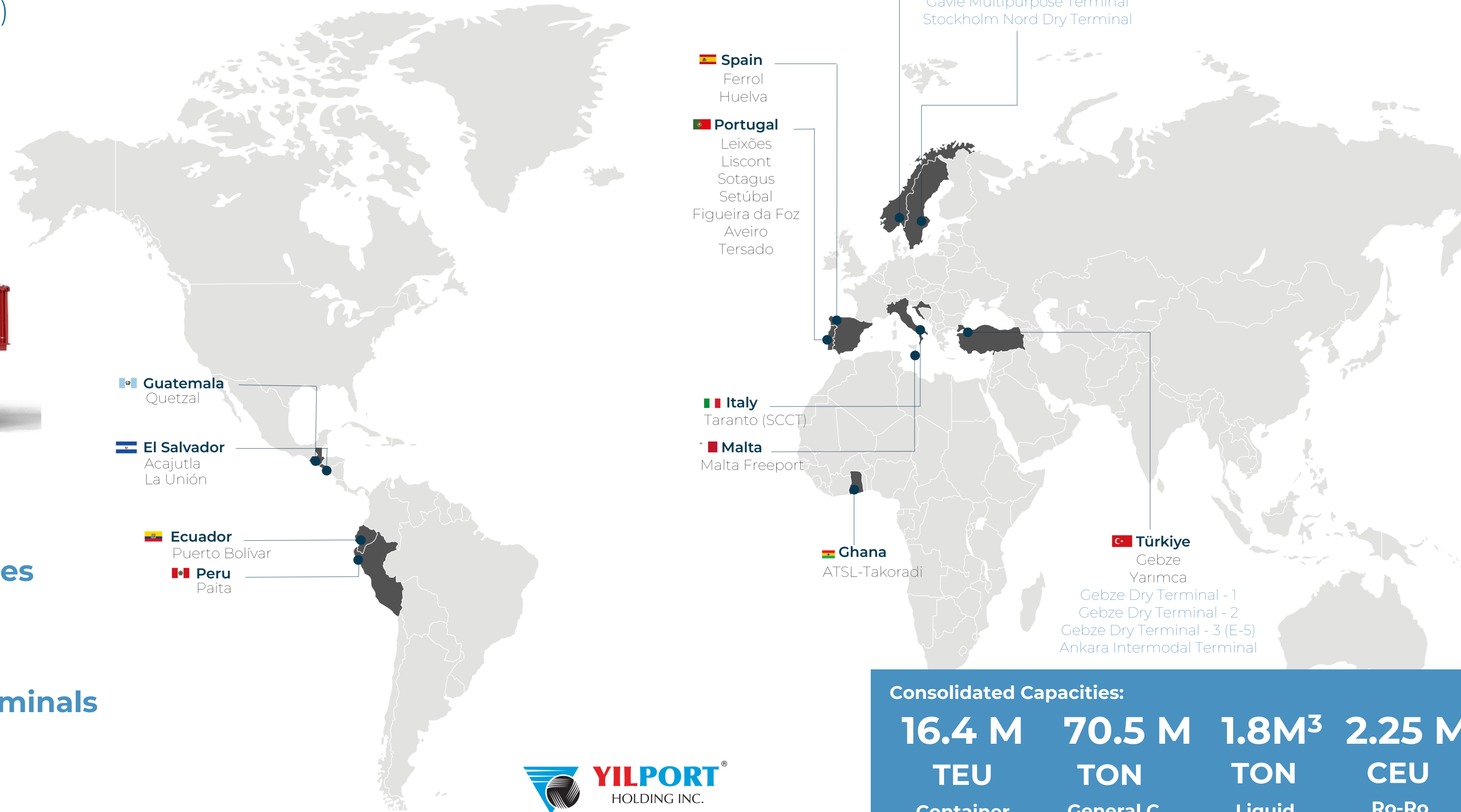
CONFERENCE THEATRE

“INTENT-DRIVEN OPTIMIZATION:
RETHINKING EFFICIENCY, SCALABILITY, AND RESULTS.”



YILPORT Holding

10th Largest International Container Terminal Operator (Equity based throughput league table - Drewry 2024)



Guatemala
Quetzal

El Salvador
Acajutla
La Unión

Ecuador
Puerto Bolívar

Peru
Paíta

Spain
Ferrol
Huelva

Portugal
Leixões
Liscont
Sotagus
Setúbal
Figueira da Foz
Aveiro
Tersado

Italy
Taranto (SCCT)

Malta
Malta Freeport

Ghana
ATSL-Takoradi

Norway
Oslo

Sweden
Gävle Container Terminal
Gävle Multipurpose Terminal
Stockholm Nord Dry Terminal

Türkiye
Gebze
Yarımca

Gebze Dry Terminal - 1
Gebze Dry Terminal - 2
Gebze Dry Terminal - 3 (E-5)
Ankara Intermodal Terminal

12 Countries

22 Marine

5 Dry Terminals

Consolidated Capacities:

16.4 M

TEU

Container

70.5 M

TON

General C.

1.8M³

TON

Liquid

2.25 M

CEU

Ro-Ro

Game Changer



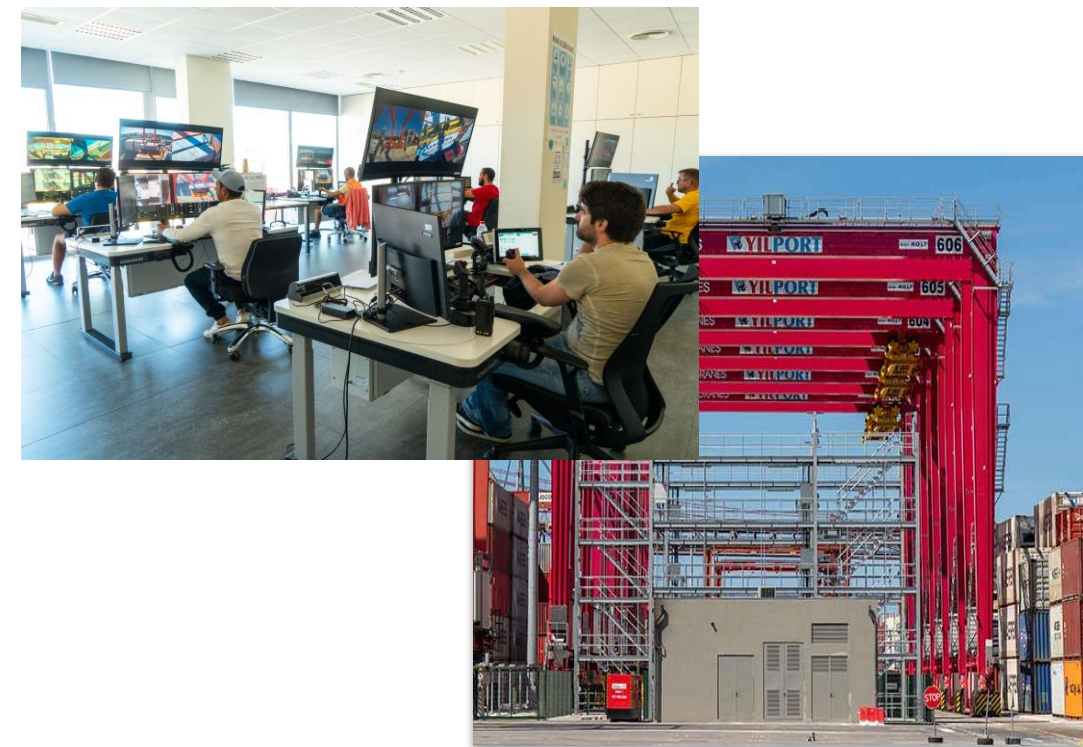
Technology of YILPORT in a Notch



Gate Automation

Key Benefits of Gate OCR & Automation at YILPORT

- Automates truck ID and gate operations, boosting efficiency and throughput
- Reduces manual errors and gate staffing needs
- In-house solution lowers costs and improves stakeholder integration
- Adapts to regional tech levels and terminal workflows
- Enhances flexibility and control over operations



Automated-RTG

Key Benefits & Drivers for Automated RTGs

- Speeds up container moves and boosts yard efficiency
- Cuts labor costs and enhances safety by reducing human-machine interaction
- Increases resilience to global disruptions
- Enables real-time tracking via TOS integration
- Supports sustainability through green tech and electrification

Microsoft Co-Pilot

AI-Driven Office Productivity

- Automates tasks and reduces manual workload
- Summarizes content and turns data into insights
- Boosts efficiency, creativity, and decision-making
- Minimizes digital overload and improves satisfaction



OUR OPERATIONAL STANDARDS

GLC Global Logistics Center



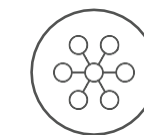
**24 / 7
Open
Planning
Center**

YILPORT Global Logistics Center

is not only a technological powerhouse but also a hub for fostering efficiency and the exchange of best practices among terminals.

GLC - One Team Multiple Terminals

- One operation language
- Navis N4
- Standardized reporting
- Analysis and global benchmarking



Efficiency
through Centralization



Data Control
& Reporting



Planning Critical Aspects of Operations



Continuous Improvement
by Advanced Technologies



Operational Efficiency
Through Optimization



Knowledge Exchange
& Collaboration



Global Deployment
of Best Practices



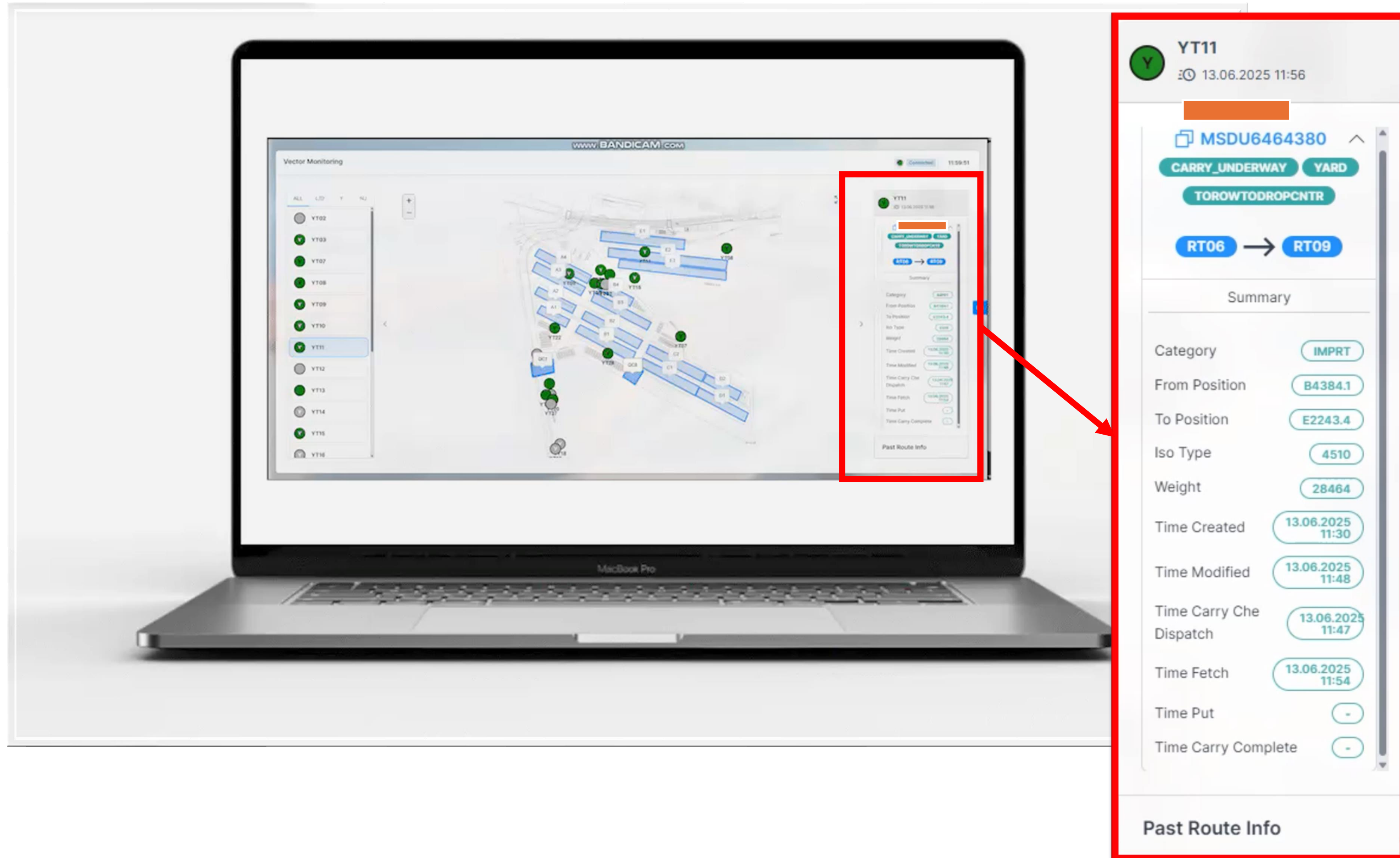
Customer Service for
Customer-Centric Approach



Harnessing Employee
Expertise



IoT Technology Realtime Equipment Monitoring



The screenshot shows a laptop displaying a real-time equipment monitoring dashboard. The dashboard features a map with various equipment locations (YT02 to YT16) and a detailed view of equipment YT11. A red box highlights the detailed view of YT11, which is shown in a separate window on the right.

YT11
13.06.2025 11:56

MSDU6464380

CARRY_UNDERWAY **YARD**

TOROWTODROPCNTR

RT06 → **RT09**

Summary

Category	IMPRT
From Position	B4384.1
To Position	E2243.4
Iso Type	4510
Weight	28464
Time Created	13.06.2025 11:30
Time Modified	13.06.2025 11:48
Time Carry Che Dispatch	13.06.2025 11:47
Time Fetch	13.06.2025 11:54
Time Put	-
Time Carry Complete	-

Past Route Info

COMMUNITY ACCESS PORTAL

Digital Platforms Enable Mobility & Real-time Communication

What is Infinity?

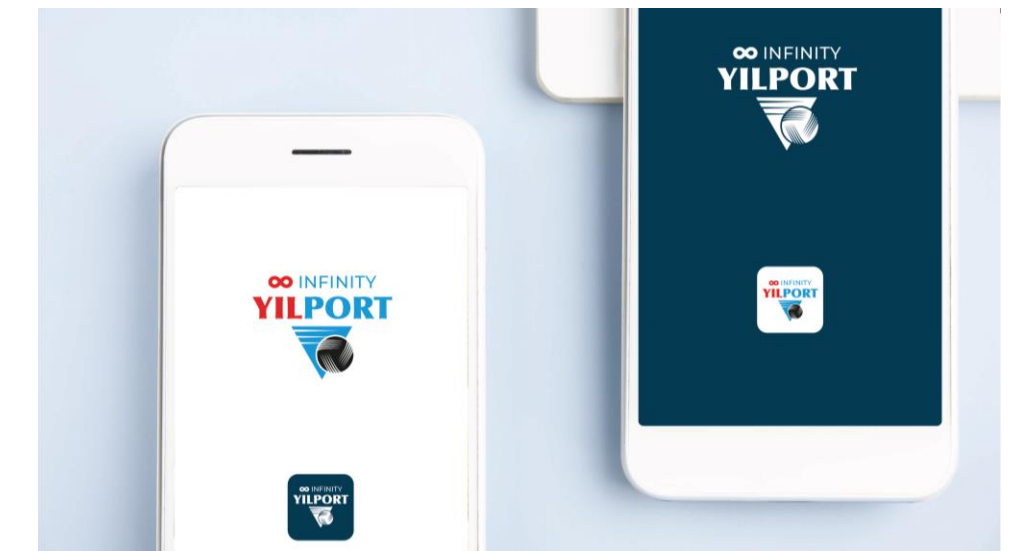
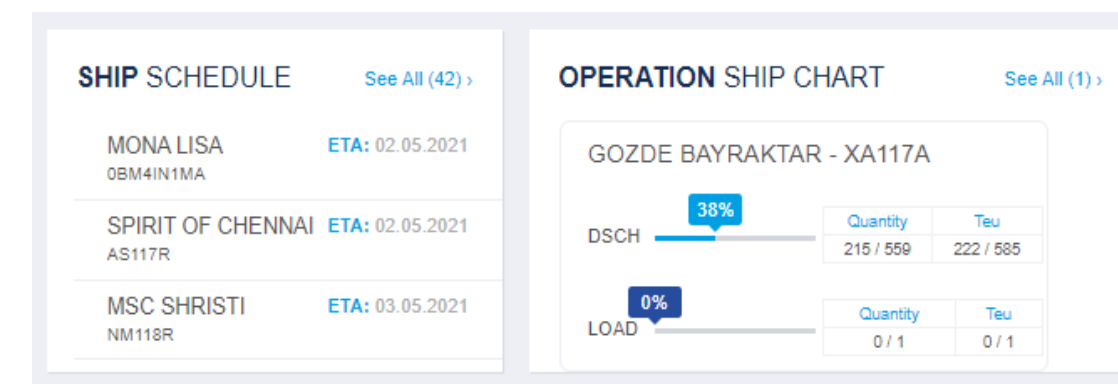
- A community access portal for YILPORT stakeholders
- Creates a platform where users can manage container information & operations movements
- Presents different data content to different user types. Also, customers can view & manage some port operations
- A multilanguage application in the languages of English, Spanish, Norwegian, Swedish, Italian, Portuguese, and Turkish

Agency User	Trucking Companies	Custom Users	Brokers
<ul style="list-style-type: none"> • General Booking & Preadvice • Pilotage Voyage Add 	<ul style="list-style-type: none"> • AISV • Web Progate • ISPS • Appointment 	<ul style="list-style-type: none"> • Hold & Release • Ministry Integration 	<ul style="list-style-type: none"> • Online Services

ISPS Form Available on Android and IOS!

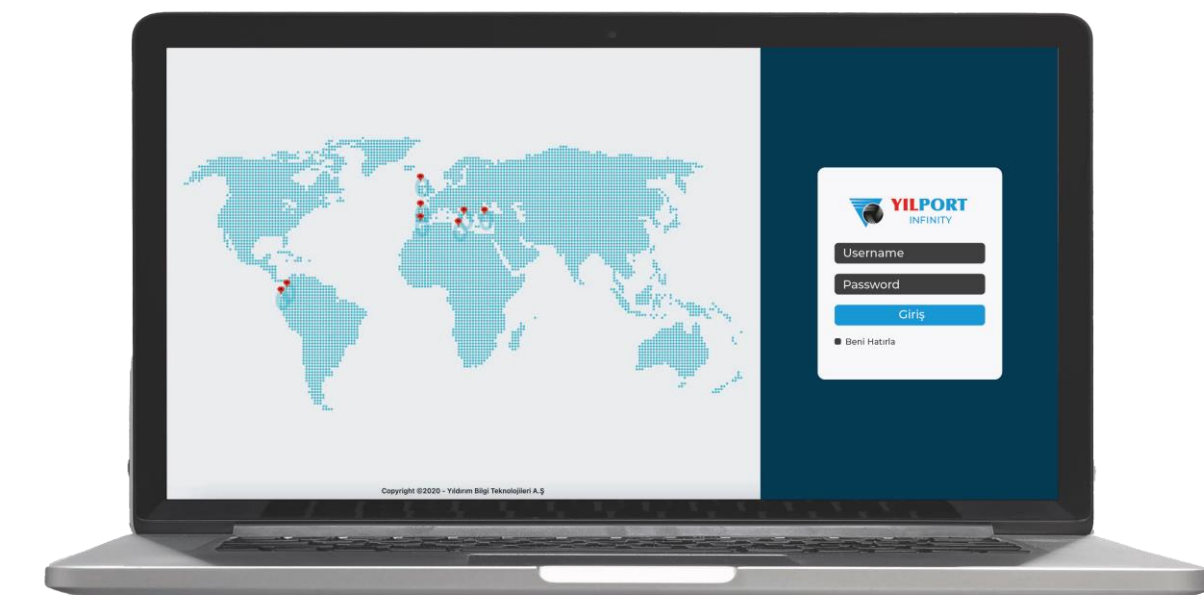
- The ISPS form which is obligatory for exporters to fill-in for the Oslo Terminal has been used since September 2016. Users can access and fill-in the form through the Infinity mobile app.

Vessel Schedule: Real Berth View On Terminal



Perspective

- Container Recap Table
- Gate In / Out
- Ship Schedule
- Operation Ship Chart



OUR OPERATIONAL STANDARDS

Innovative Technology for Efficient Process Design



Expertise in headquarters with a big focus on further innovation and automation to improve operational same as administration processes!

Terminal Operating Systems

- Navis N4
- Sigma (*Used for general cargo and pilotage operations.*)

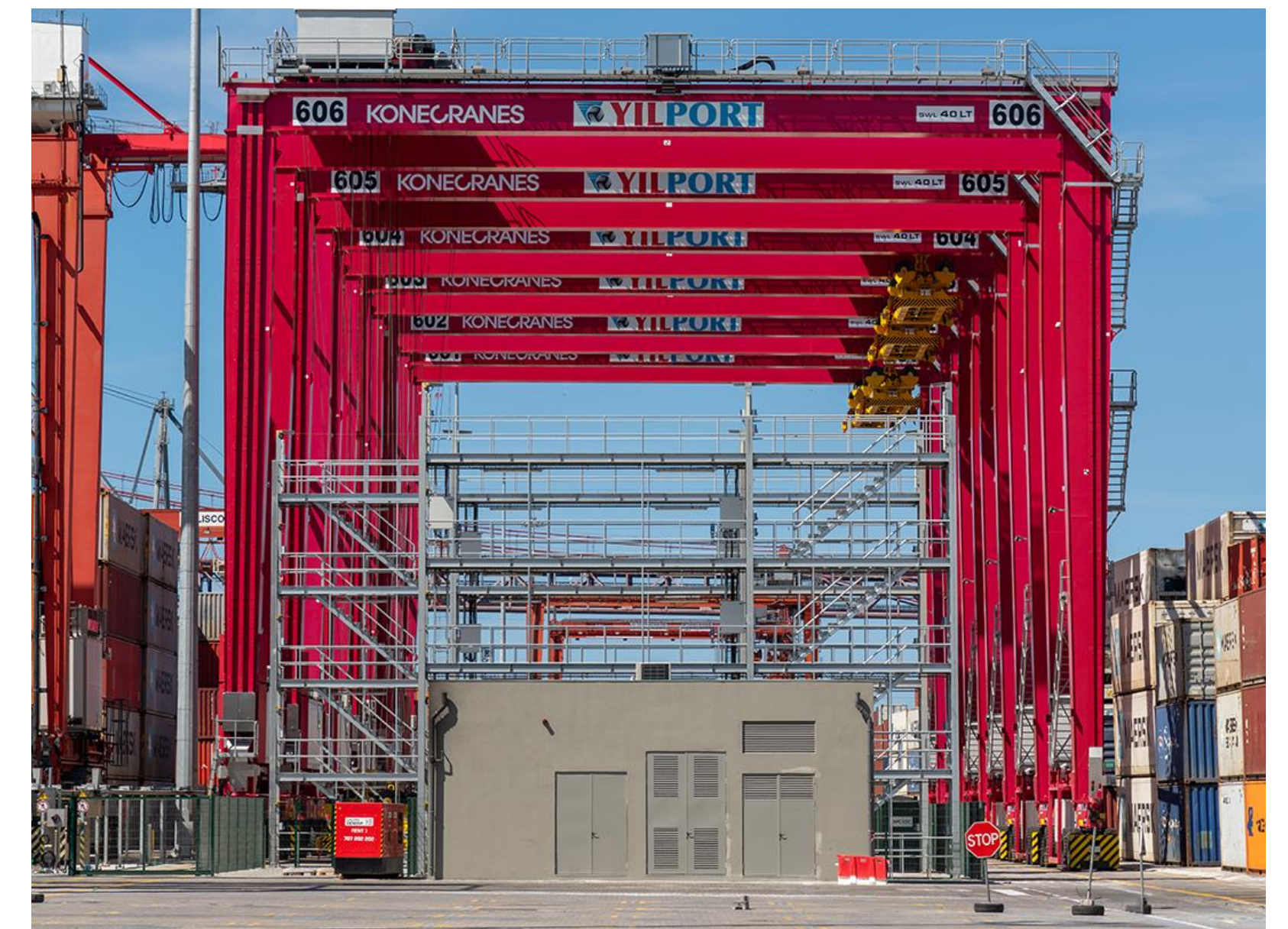
Other Tools

- EDI Standards
- Infinity Customer Portal
- SAP, C4C



Automation

- Gate Automation
- Crane OCR
- Remote crane control



A Glimpse into Future Operations

Building the Smart Ports of the Future

Our digital transformation journey is driven by five core pillars designed to optimize operations, enhance agility, and ensure future readiness across all terminals globally.

1. Cloud Migration

- Transitioning from legacy systems to hyper-scaler cloud environments
- Embracing a subscription-based model (Opex over Capex)
- All new software to be cloud-native and scalable

2. Global Platforms & Partners

- Standardizing operations with trusted platforms: SAP, Microsoft, Navis
- Leveraging global expertise and reliability
- Enhancing integration, uptime, and interoperability

3. Centralized Data Management

- Creating cloud-based Data Lakes
- Enabling real-time, end-to-end data visibility
- Supporting smarter decision-making across the value chain

4. Cyber Security

- Securing our digital footprint with AI-enabled, cloud-native tools
- Ensuring compliance, resilience, and threat prevention
- Collaborating with global cybersecurity leaders

5. Artificial Intelligence

- Deploying AI Agents and creating Digital Twins
- Automating and optimizing terminal operations
- Driving predictive analytics and operational excellence



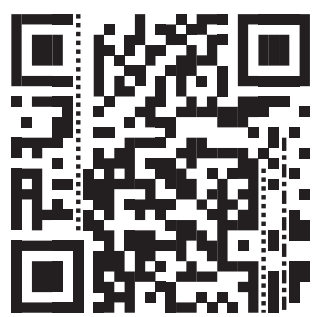
Connecting the world through smart, sustainable, and scalable terminal technology.

Thank you

FOLLOW US ON

Instagram
#yilport

LinkedIn
#yilport



Websites:
www.yilport.com

